

Make Your House Look Expensive With A Cladding Makeover

When you are ready to design your new home the first question you ask yourself is how the house is going to look outside and what other people are going to think about your home. So it is important that you select external materials the right way, depending if your future home is going to be a beach house, a house located in the mountains, in the city suburb or in a country area. Depending on location each house has a slightly different design and character. Many houses close to beaches are old weatherboard houses. To make a quick upgrade and bring the value of the house up, the old weatherboard walls can be easily replaced with new technology materials that look like weatherboard but are very durable, come with different patterns and textures and colors. The new trend in the city and suburban areas is to replace existing old-looking houses with a new modern look by incorporating different patterns of modern cladding on front walls, balconies or below the roof. This method is much cheaper and gives a great modern effect compared to building a new house from scratch.

Cladding is a building material used to cover the exterior of a building in both commercial and domestic applications, composed into sheets, boards and panels of different shapes.

There are two types of cladding: Fibre cement and weatherboards.

Fibre cement is sheet cladding used for lining of external walls in new homes, renovations and commercial buildings. It comes in various patterns and colors and contributes to an inspirational, modern look of new home designs. They are resistant to rotting, fire or permanent water and termite damage and require little maintenance over the life span when installed properly. As they are easy to work with they are an ideal choice for professional builders, designers, architects, homeowners and renovators as well.

For more information on modern Fibre cement cladding design see:

Cemintel <http://www.cemintel.com.au/products/?app=1492>



Barrestone



Edge



Slimline

Surround

Terrytory

For more information on traditional Fibre Cement cladding design see:

Jamies Hardie <http://www.jameshardie.com.au/products/external-cladding/>



HardieFlex

HardiePlank



HardieTex

Linea



Matrix

PanelClad



PrimeLine

Stria

Timber Cladding is suitable for use on traditional or contemporary styled homes. It is available in different finishes with natural colour or silvery gray colour. They can be finished using stains, oils or paints. Timber cladding can be used for the entire exterior of the house

or can be combined with other materials so that the timber cladding becomes a “feature wall”. Using timber cladding will also increase its resale value
For more information see:

Boral <https://www.boral.com.au/products/timber/cladding/timber-cladding>

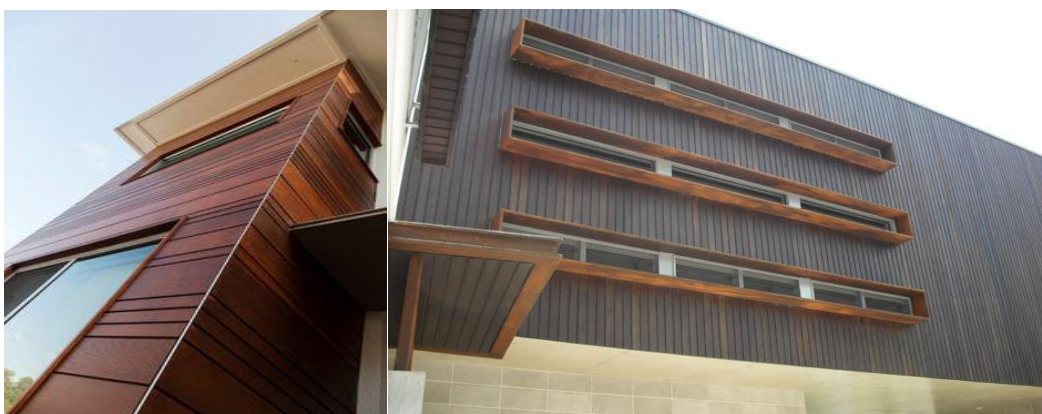


Urbanline <https://www.urbanline.com.au/products/euro-selekta-clad/>



Duro

Hardwood



Shiplap

Spotted Gum

There are large number of choices of cladding on the market at various prices. The external look of the house can be design by an architect or building designers by drawing the structure of your building in 3D and by applying various cladding’s texture and color so you can decide quickly which cladding would suit your house best.